



Rhony C

Height 170 - 5' 7" Chest 83 - 32" 1/2 Waist 60 - 23" 1/2 Hips 88 - 35" Shoe 39 - 7 1/2

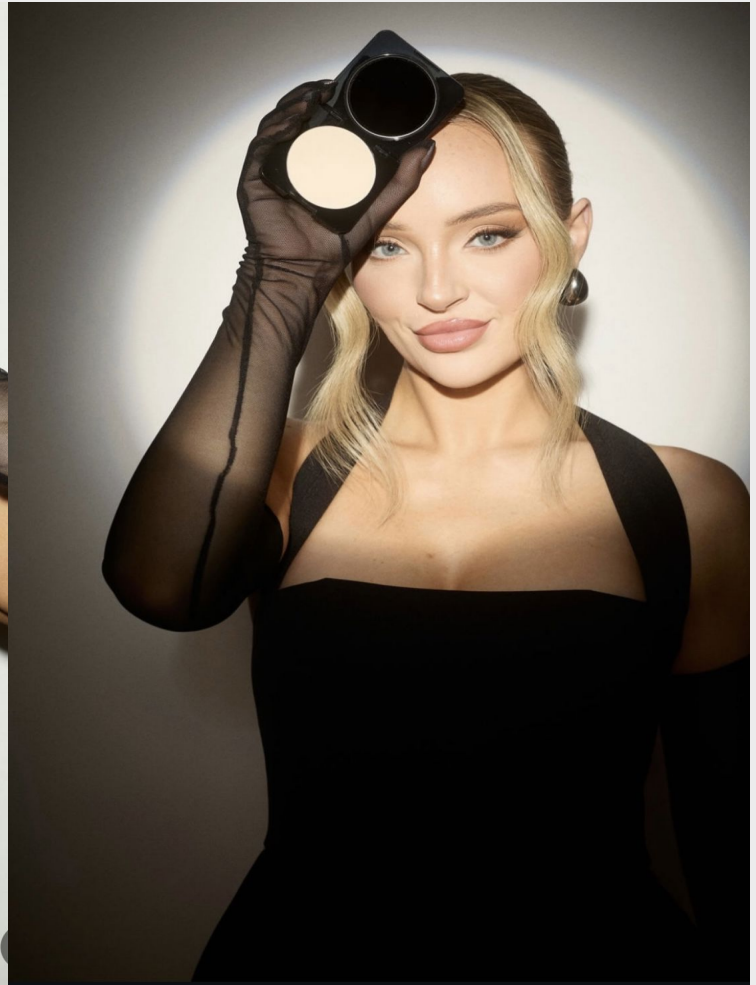
GLAMZMODEL



Rhony C

Height 170 - 5' 7" Chest 83 - 32" 1/2 Waist 60 - 23" 1/2 Hips 88 - 35" Shoe 39 - 7 1/2

GLAMZMODEL



Rhony C

Height 170 - 5' 7" Chest 83 - 32" 1/2 Waist 60 - 23" 1/2 Hips 88 - 35" Shoe 39 - 7 1/2

GLAMZMODEL



Rhony C

Height 170 - 5' 7" Chest 83 - 32" 1/2 Waist 60 - 23" 1/2 Hips 88 - 35" Shoe 39 - 7 1/2

GLAMZMODEL



Rhony C

Height 170 - 5' 7" Chest 83 - 32" 1/2 Waist 60 - 23" 1/2 Hips 88 - 35" Shoe 39 - 7 1/2

GLAMZMODEL



Rhony C

Height 170 - 5' 7" Chest 83 - 32" 1/2 Waist 60 - 23" 1/2 Hips 88 - 35" Shoe 39 - 7 1/2

GLAMZMODEL